

TM 900 Buoy

900 mm Dia Marker Buoy

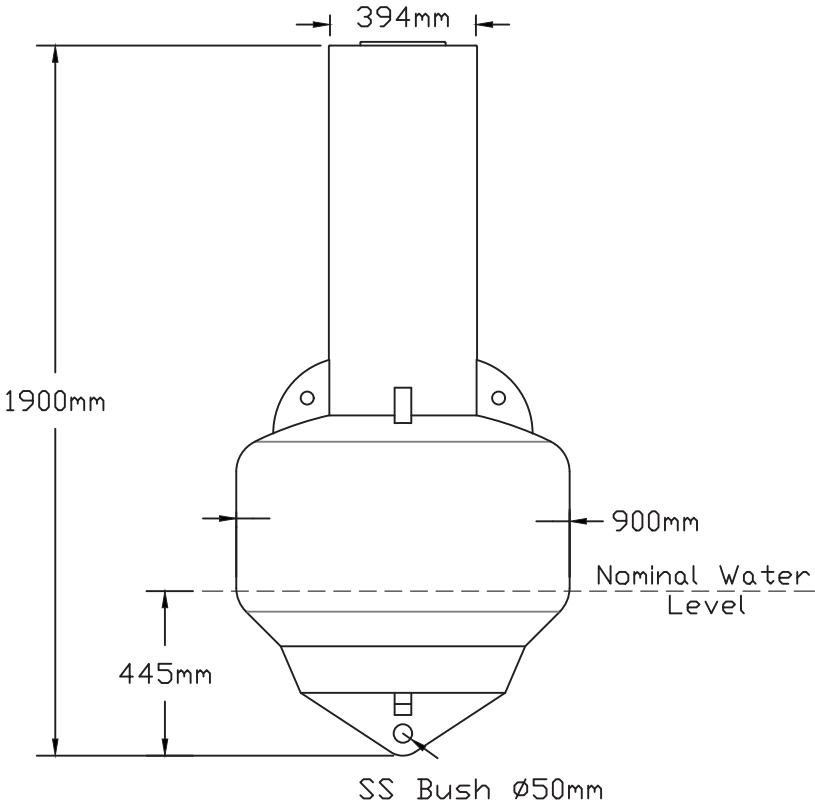
TRITONBUOYS



Tritonbuoys has developed a diverse selection of navigation buoys that adhere to rigorous quality standards and boast a proven track record of reliability. Each buoy is crafted from premium UV-stabilized virgin polyethylene and filled with closed-cell polyurethane to prevent water ingress if the outer layer is damaged. This design ensures exceptional performance and long-lasting durability.

Product Code: TM 900

The Tritonbuoys TM900 is perfect for mooring, beach marking, marina marking, speed zones, and restricted areas. It features an enhanced mooring load, making it suitable for deployment in locations that require a heavier mooring system.



TRITONBUOYS

Features:

- High visibility colours as per IALA recommendations.
- Enhanced mooring load.
- 8mm wall thickness.
- Navigation light mounting available.



| General Characteristics | |
|---------------------------------|---|
| Diameter | 900mm |
| Available Colour | Green, Red, Yellow, White as per IALA recommendations; Customisation Available. |
| Freeboard, Minimum | 240 mm |
| Draft, Maximum | 445 mm |
| Maximum Mooring Load | 280 kg |
| Visual/Focal Area | 0.84 m^2 |
| Physical Characteristics | |
| Material | Rotationally- Moulded UV Stabilized Virgin Polyethylene |
| Wall Thickness | 8mm Buoy Section |
| Ballast (Internal Concrete) | 60 kg (Customisable) |
| Filling | Closed cell Polyurethane (Density > 45kg/m^3) |
| Total Height | 1900mm |
| Net Weight | 118kg (including internal ballast) |
| Certifications | |
| Quality Assurance | ISO9001:2015 |
| Warranty | 1 Year** |
| IP/Trademark | TRITONBUOYS® is a registered trademark |
| Options Available | |
| Signage | |
| In-Mold &/or Post Mold Stickers | |
| Navigation Lights | |

* Specifications subject to change or variation without notice
 ** Warranty subject to terms & conditions